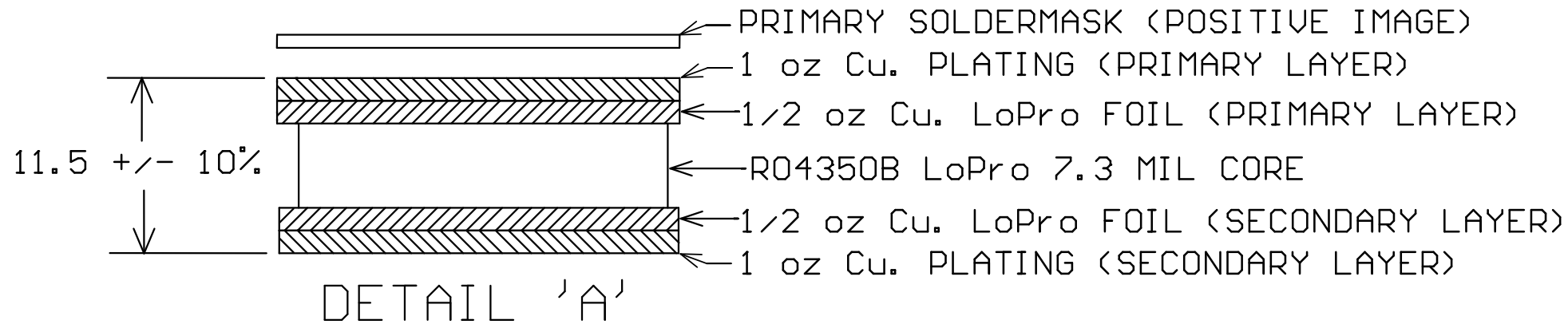


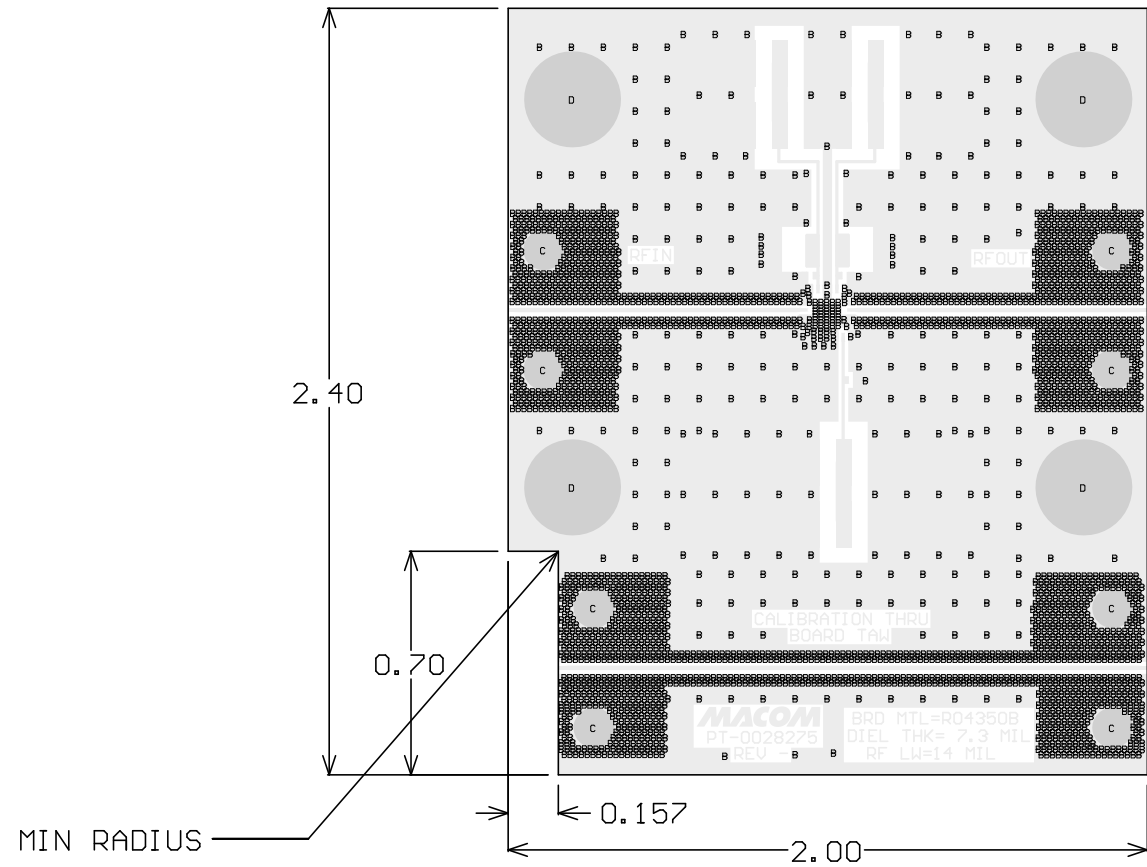
BOARD DIELECTRIC / COPPER STACKUP  
FINISHED BOARD THICKNESS  
(EXCLUDING PRIMARY SOLDERMASK)

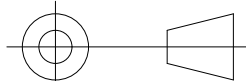


Symbol	Count	Drill Size	Tolerance	Plated	Hole Type
B	2907	8.00mil	+/-3mil	PTH	Round
C	8	78.00mil	+/-3mil	PTH	Round
D	4	185.00mil	+/-3mil	PTH	Round
	2919 Total				

NOTES:

- MATERIAL:  
R04350B LoPro FOIL 7.3 MIL THICKNESS.  
COPPER ON PRIMARY AND SECONDARY SIDE TO BE PLATED UP AN ADDITIONAL 1 OZ CU. MINIMUM.  
MATERIAL STACKUP, THICKNESS, AND STARTING COPPER FOIL PER DETAIL 'A'.
- FINISH:  
PRIMARY AND SECONDARY SIDE FINISH:  
ELECTROLESS NICKEL/IMMERSION GOLD (ENIG) PER IPC-4552.  
ELECTROLESS NICKEL: 118-236 MICROINCHES  
IMMERSION GOLD: 2-8 MICROINCHES  
THERE SHALL BE NO PITS, PIN HOLES OR NODULES WITHIN EXPOSED METAL AREAS.  
STACKUP REPRESENTS FINISHED THICKNESS.
- PCB SHALL BE BUILT PER IPC-6012 CLASS 2 AND CONFORM TO IPC-A-600 CLASS 2 LATEST REVISIONS.
- ALL HOLES TO BE PLATED THRU UNLESS OTHERWISE SPECIFIED.
- MINIMUM LINE WIDTH AND SPACING SHALL BE +/-1 MIL.
- ELECTRONIC DATA IS EQUAL TO THE FINISHED LINE WIDTH.
- ALL 8.0 MIL HOLES, AFTER PLATING, SHALL BE FILLED WITH NON-CONDUCTIVE MATERIAL, CAPPED OVER, AND PLANARIZED FLAT.
- COPPER PLATING IN THROUGH HOLES WILL BE .001'' MINIMUM AVERAGE WITH AN ABSOLUTE MINIMUM OF .0007''.
- DIMENSIONS SHOWN ARE FOR LOCATION OF 0,0 FOR THE DRILL FILE.
- GROUNDING COPLANAR LINES ON LAYER 1 ARE CONTROLLED IMPEDANCE. A 14 MIL LINE WIDTH SHALL BE 50 OHMS +/- 5% WITH REFERENCE TO THE GND PLANE WITH A DISTANCE OF 7.3 MIL FROM SECONDARY LAYER.
- NO SILKSCREEN PCB.
- SMOBC, LPI SOLDER MASK COATING (POSITIVE IMAGE, MECHANICAL 16) DEFINED AREA BY ARTWORK, 'POSITIIVE SOLDERMASK' SHALL CONFORM TO IPC-SM-840, CLASS T, COLOR GREEN. PRIMARY SIDE ONLY.
- ALL MATERIALS DESCRIBED IN THIS DOCUMENT/DRAWING SHALL BE IN COMPLIANCE WITH AND CONTAIN NO SUBSTANCES RESTRICTED OR REQUIRING SPECIAL RECLAMATION UNDER THE LATEST RoHS, WEEE OR ELV DIRECTIVES.



UNLESS OTHERWISE SPECIFIED INTERPRET DRAWING PER ASME Y14.5 DO NOT SCALE THIS DRAWING	UNLESS OTHERWISE SPECIFIED DIMENSIONS ARE IN INCHES		<div>MACOM</div> <div>WWW.MACOM.COM</div>		
	TOLERANCES ON				
	DECIMALS	ANGLES			
NOTE: THIS DRW INCORPORATES THIRD ANGLE PROJECTION			TITLE PCB, SAMPLE BOARD, MAAP-011319		
MACOM Technology Solutions CONFIDENTIAL INFORMATION SUBJECT TO NDA	<div>.X ±.1 .XX ±.02 .XXX ±.005 .XXXX ±.0005</div>	±0.5			
UNLESS OTHERWISE SPECIFIED 63/ ALL OVER			SIZE	DRAWING NO.	REVISION
MATERIAL SEE NOTE 1			B	PT-0028275	
FINISH SEE NOTE 2			SCALE: 1:1	PACKAGE TYPE: 4mmAQFN50P-24LD	SHEET 1 OF 1